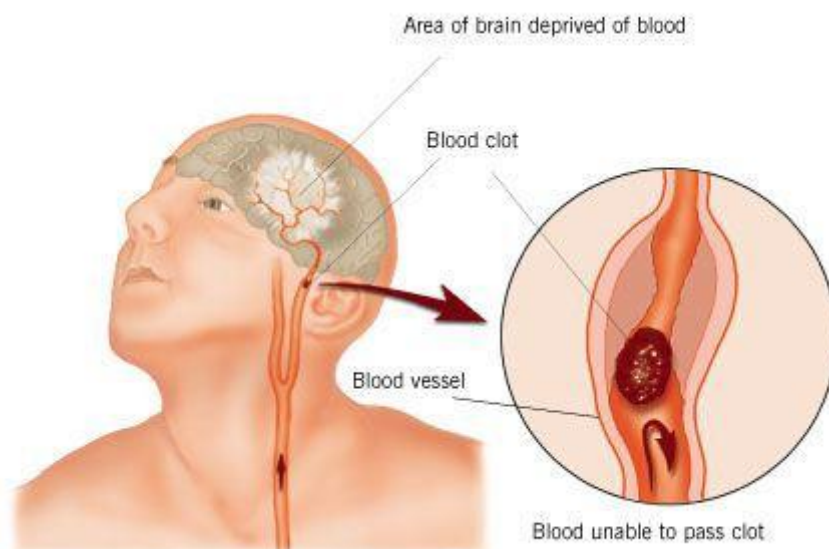


PROMED TRAINING LTD - STROKES



STROKE IDENTIFICATION:

During a BBQ, a friend stumbled and took a little fall - she assured everyone that she was fine (they offered to call paramedics)she said she had just tripped over a brick because of her new shoes.

They got her cleaned up and got her a new plate of food. While she appeared a bit shaken up, Ingrid went about enjoying herself the rest of the evening.

Ingrid's husband called later telling everyone that his wife had been taken to the hospital - (at 6:00 pm Ingrid passed away.) She had suffered a stroke at the BBQ. Had they known how to identify the signs of a stroke, perhaps Ingrid would be with us today. Some don't die.... they end up in a helpless, hopeless condition instead.

It only takes a minute to read this...

A neurologist says that if he can get to a stroke victim within 3 hours he can totally reverse the effects of a stroke... totally . He said the trick was getting a stroke recognized, diagnosed, and then getting the patient medically cared for within 3 hours, which is tough.

RECOGNIZING A STROKE

**Thank God for the sense to remember the "3" steps, STR .
Read and Learn!**

Sometimes symptoms of a stroke are difficult to identify. Unfortunately, the lack of awareness spells disaster. The stroke victim may suffer severe brain damage when people nearby fail to recognize the symptoms of a stroke .

Now doctors say a bystander can recognize a stroke by asking three simple questions:

S * Ask the individual to SMILE.

**T * Ask the person to TALK and SPEAK A SIMPLE SENTENCE (Coherently)
(i.e. It is sunny out today)**

R * Ask him or her to RAISE BOTH ARMS.

If he or she has trouble with ANY ONE of these tasks, call 999/911 immediately and describe the **symptoms to the dispatcher.**

New Sign of a Stroke ----- Stick out Your Tongue

NOTE: Another 'sign' of a stroke is this: Ask the person to 'stick' out his tongue.. If the tongue is 'crooked', if it goes to one side or the other , that is also an indication of a stroke.